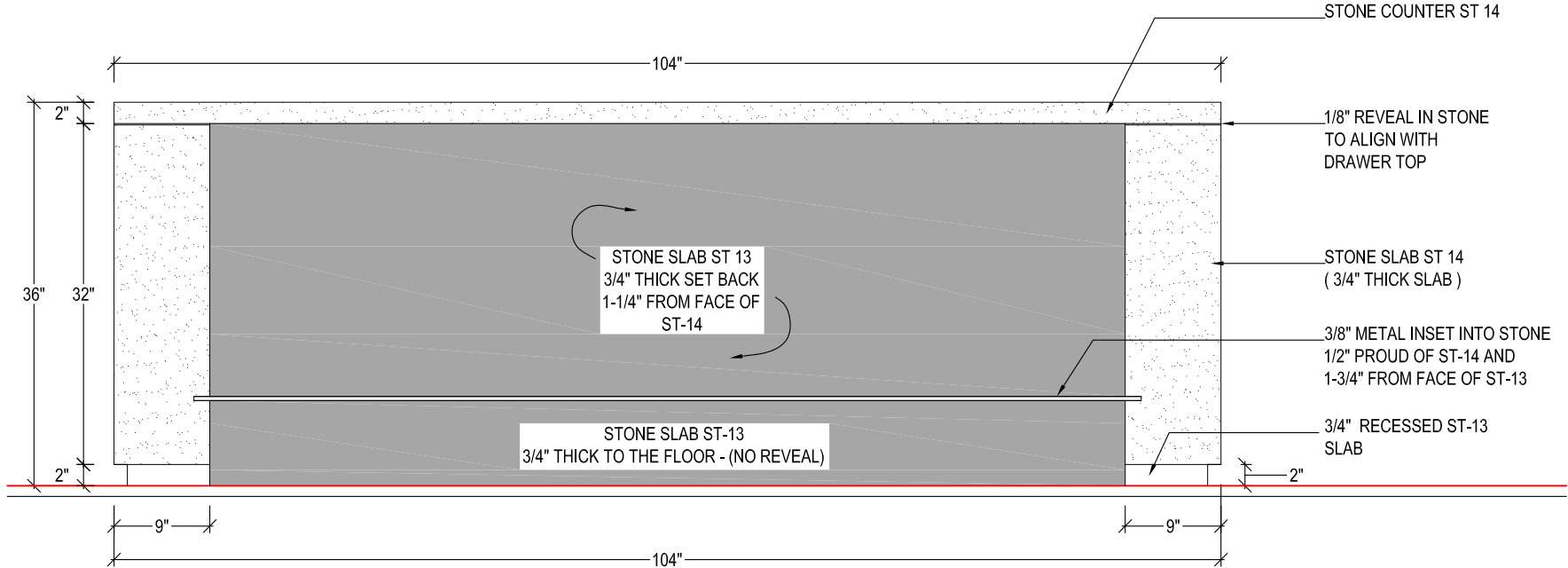
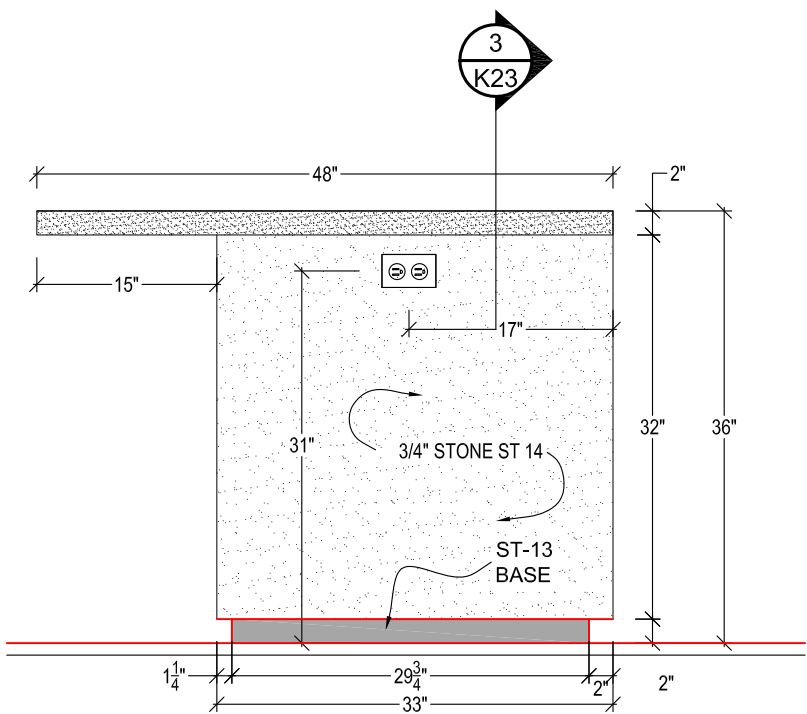


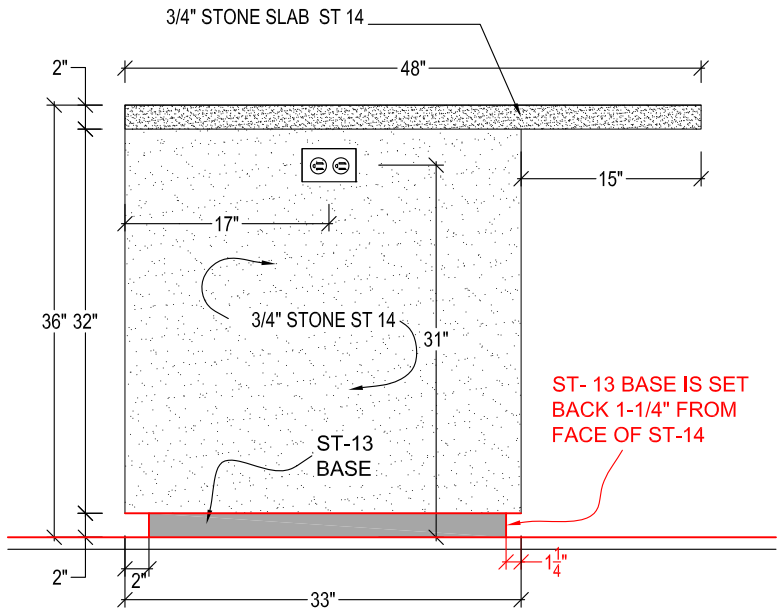
1 ELEVATION NORTH
K21 SCALE : 3/4" =12"



2 ELEVATION SOUTH
K21 SCALE : 3/4" =12"



3 ELEVATION EAST
K21 SCALE : 3/4" =12"



4 ELEVATION WEST
K21 SCALE : 3/4" =12"

QUESTIONS:

WILL THE STONE RETURN BACK AT THE BOTTOM OF THE COUNTER AND HOW FAR? STEEL MAY HAVE TO BE SHORTER TO ACCOMMODATE

CABINETRY:

CABINETS TO BE CONSTRUCTED OF ANIGRE VENEER ON BALTIC BIRCH CORE FOR STRUCTURAL INTEGRITY AS PER REQUEST OF STRUCTURAL ENGINEER

ARE THE FACES 3/8" BACK AS IN THE SOUTH ISLAND?

APPLIANCES:

COOKTOP:
WOLF SRT 486G 48" SEALED BURNER
RANGETOP

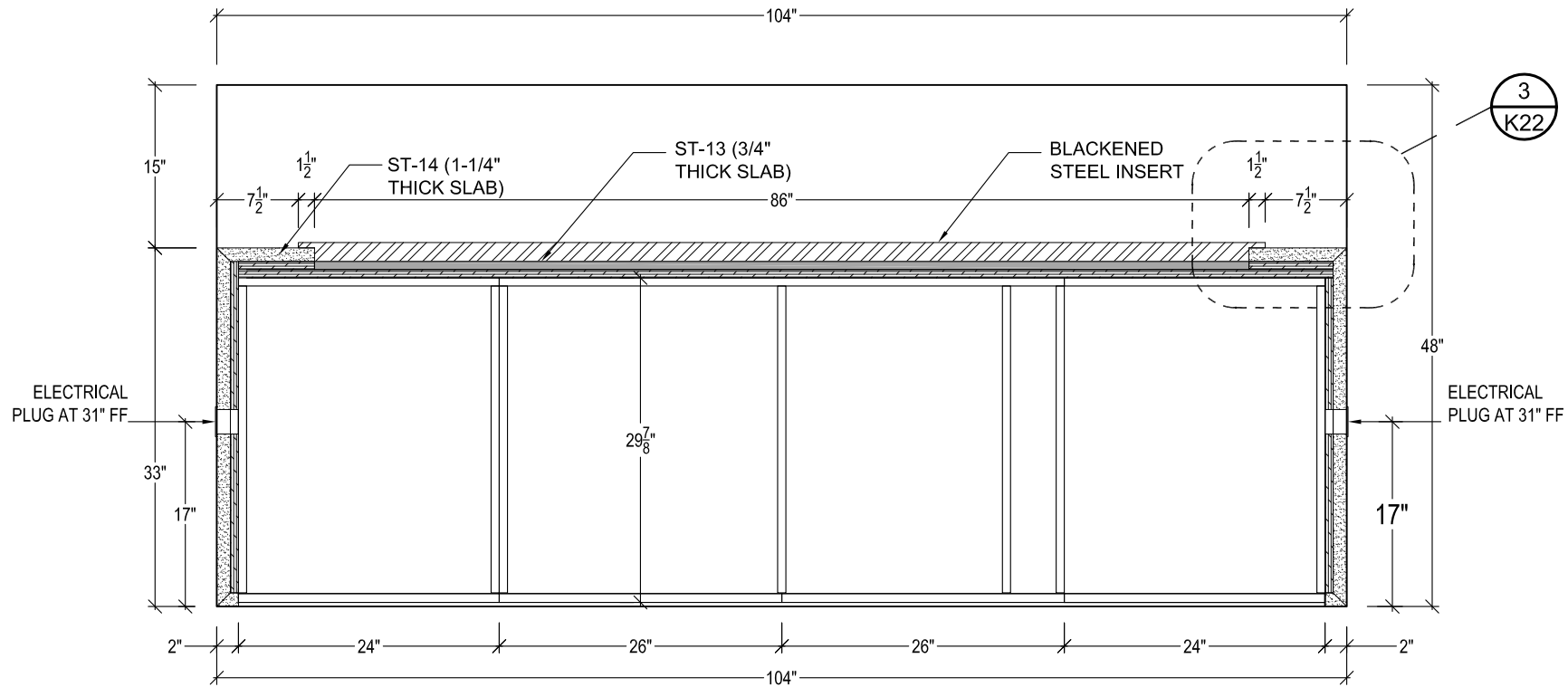
DETAILS:

ARE THE FACES 3/8" BACK AS IN THE SOUTH ISLAND?

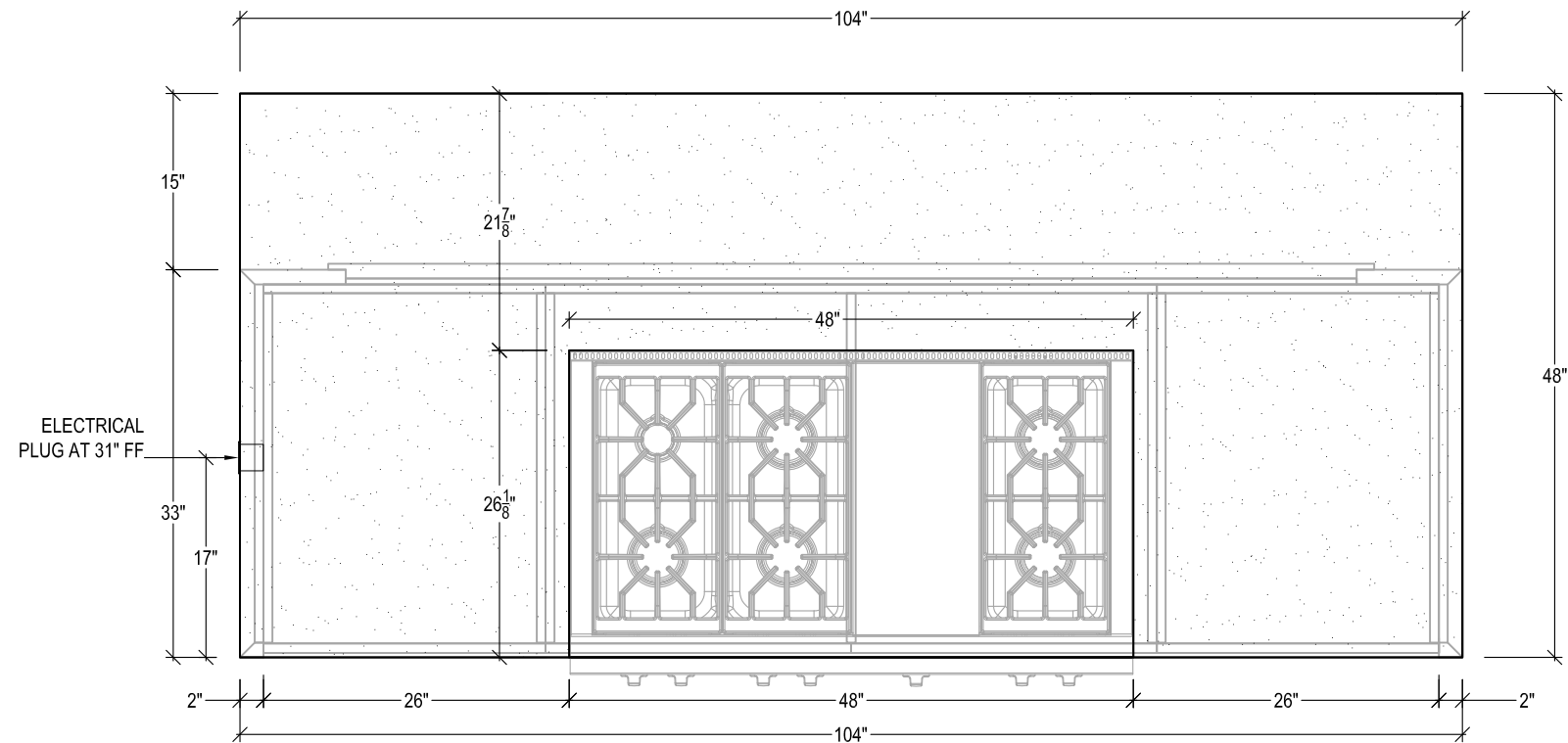
ELECTRICAL:

PLUG WIRING ROUTE - TBC

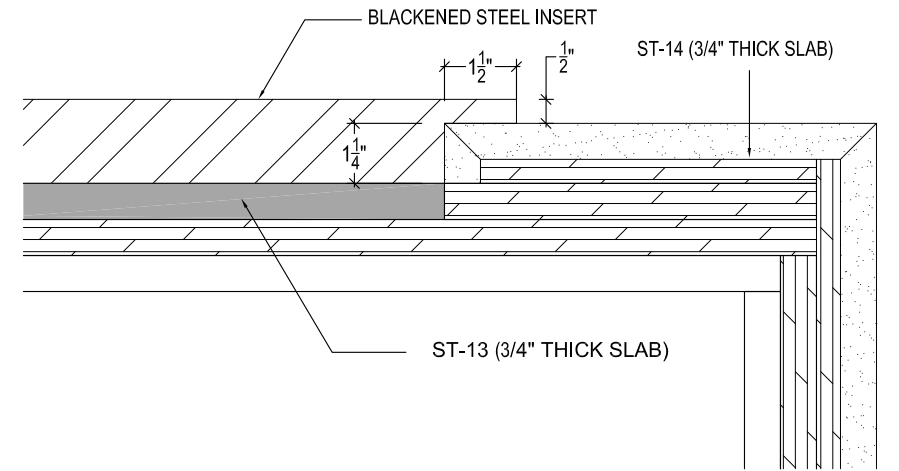
	TITLE:		JUNE 14,2012	REV1	AUG 20,2012	D-K21
	AREA:	KITCHEN		REV2	SEPT 14,2012	
	SCALE:	AS SHOWN	DRAWN BY:	REV3		
21 of 27						



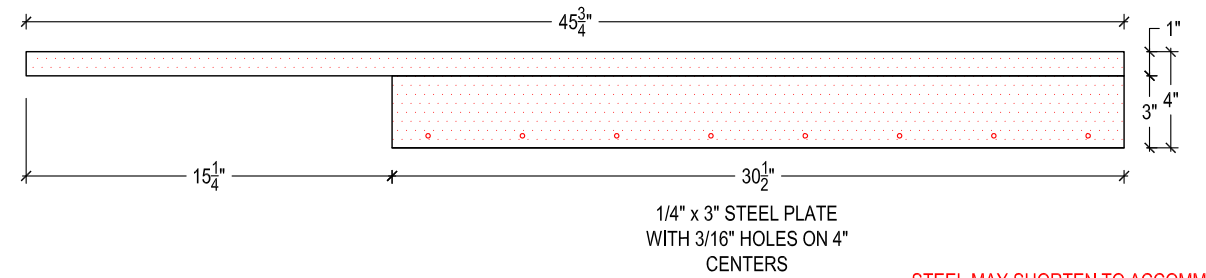
1 SECTION
K22 SCALE : 3/4" =12"



2 PLAN
K22 SCALE : 3/4" =12"

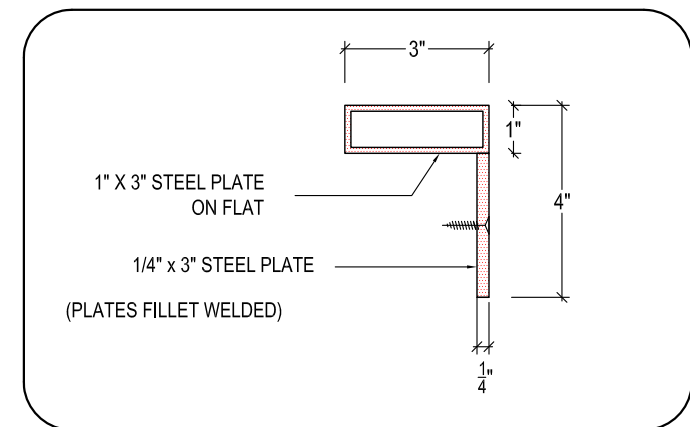


3 DETAIL
K22 SCALE : 3" =12"



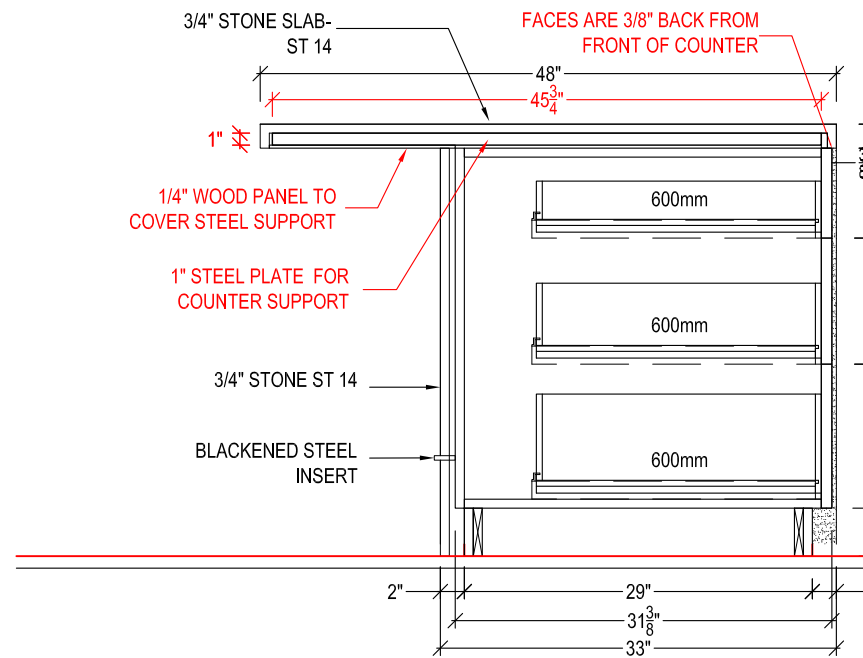
4 STRUCTURAL STEEL DETAIL
K22 SCALE : 1-1/2" =12"

STEEL MAY SHORTEN TO ACCOMMODATE
COUNTER TOP RETURN UNDER

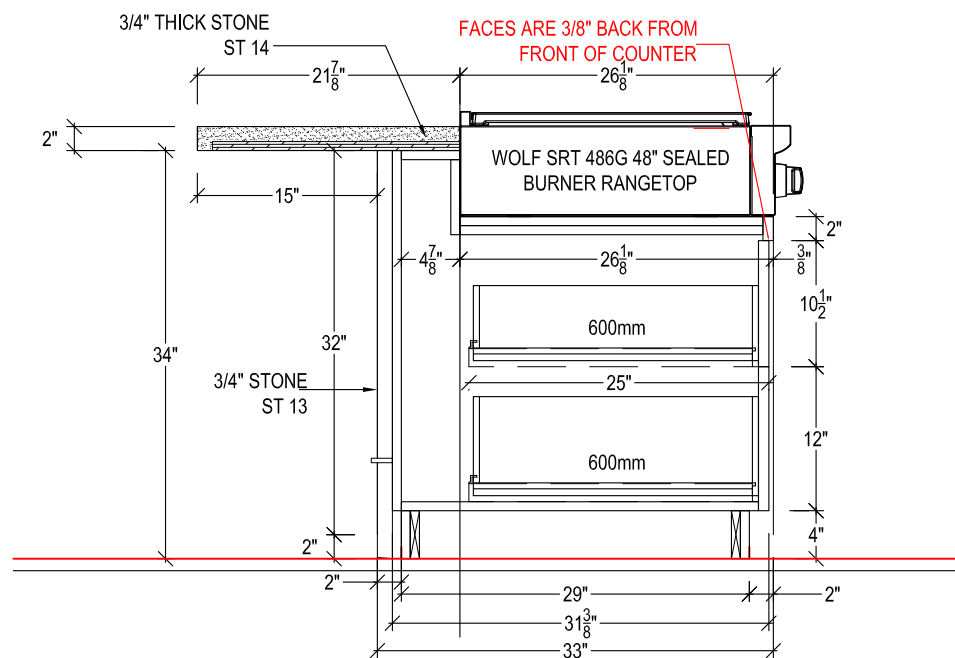


5 DETAIL - CROSS SECTION
K22 SCALE : 3" =12"

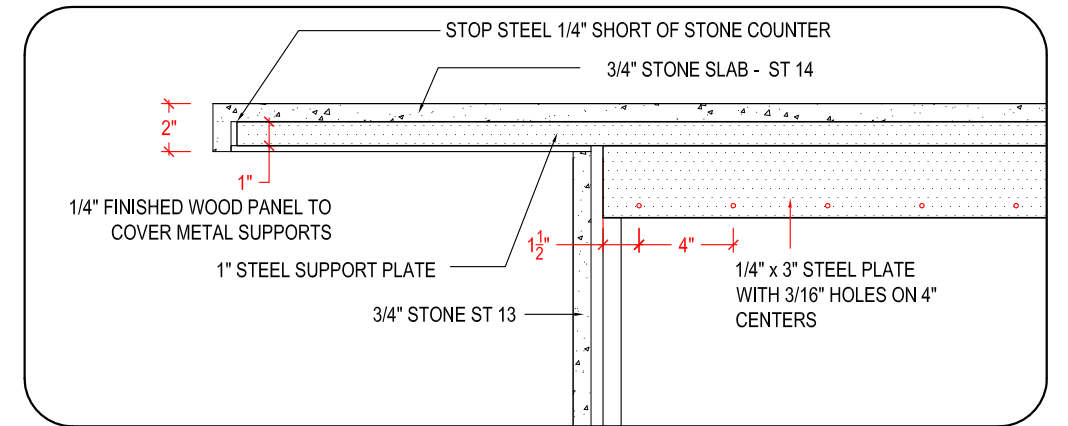
TITLE:	JUNE 14,2012			REV1	AUG 20,2012	D-K22
	KITCHEN			REV2	SEPT 14,2012	
	AS SHOWN			REV3		
AREA:			DRAWN BY:			22 of 27



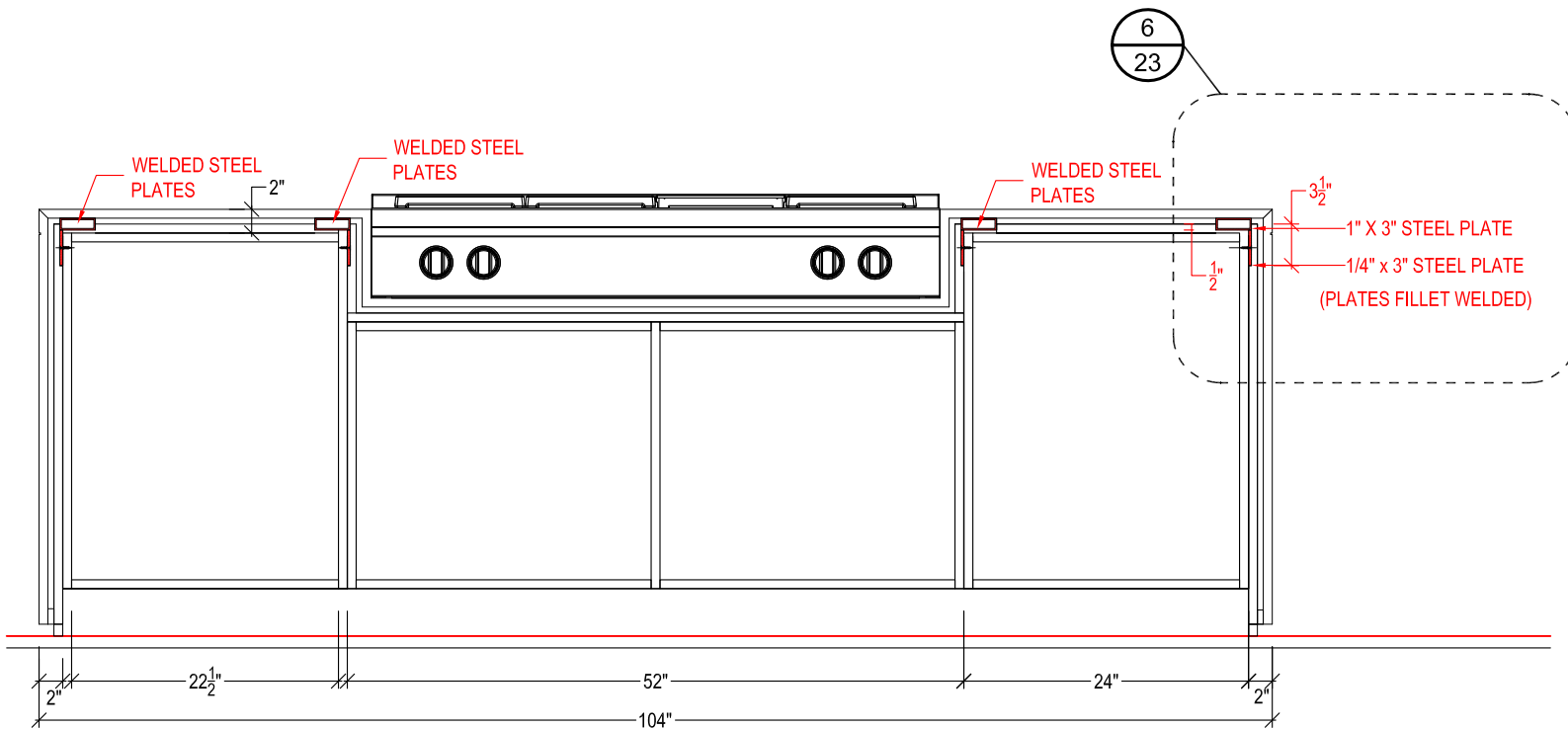
1
SECTION
SCALE : 3/4" =12"



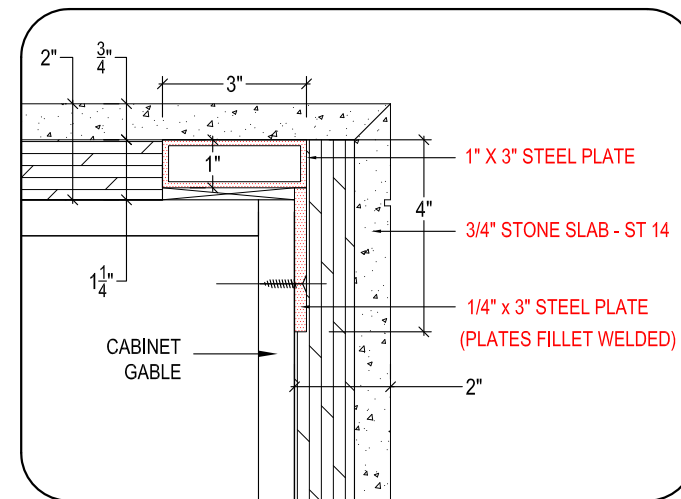
2
SECTION
SCALE : 3/4" =12"



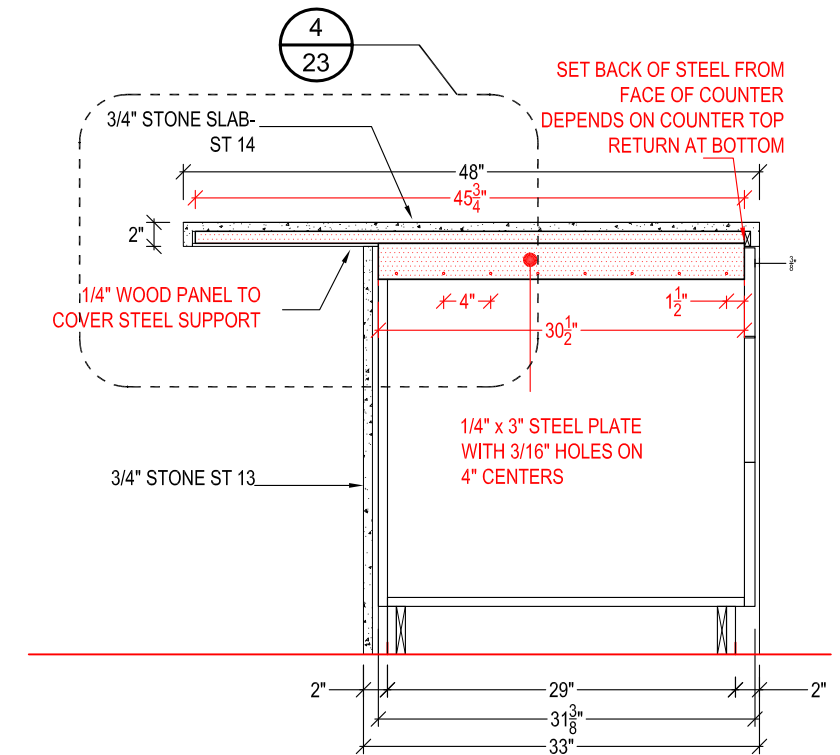
4
DETAIL AT STEEL
SCALE : 1-1/2" =12"



3
SECTION SHOWING STEEL
SCALE : 3/4" =12"

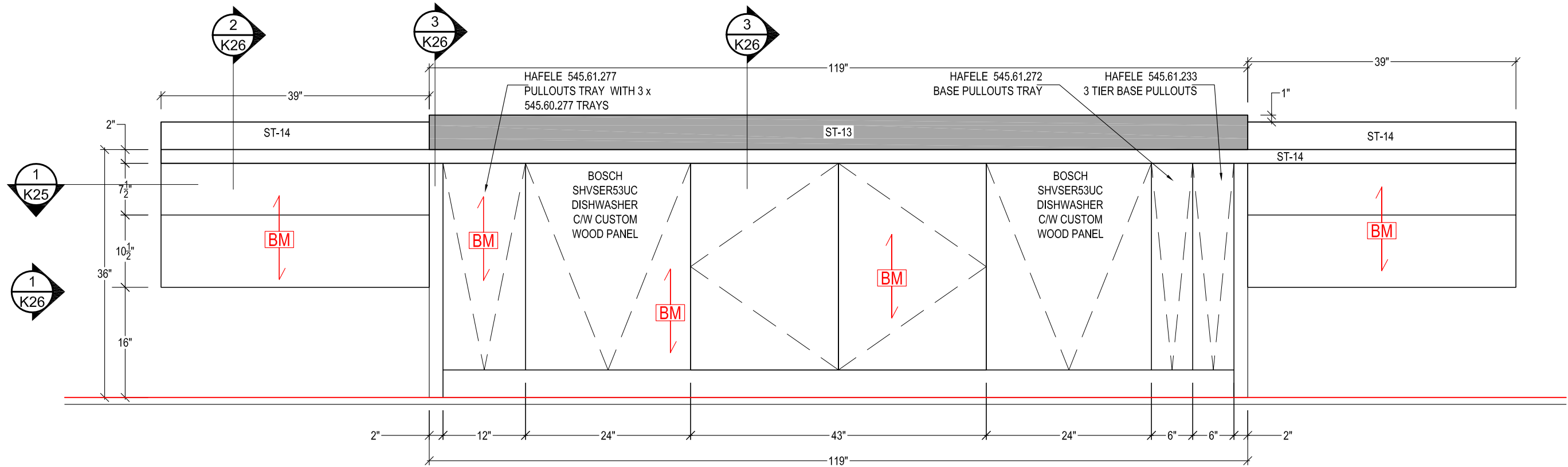


6
DETAIL AT STEEL
SCALE : 3" =12"

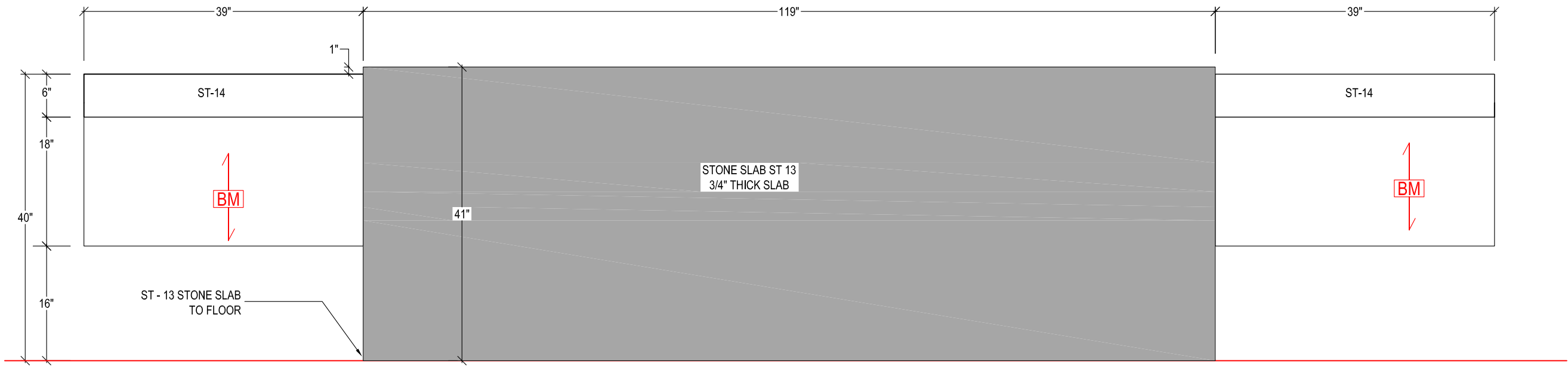


5
SECTION SHOWING STEEL
SCALE : 3/4" =12"

	TITLE:		JUNE 14,2012	REV1	AUG 20,2012	D-K23
	AREA:	KITCHEN		REV2	SEPT 14,2012	
	SCALE:	AS SHOWN	DRAWN BY:	REV3		

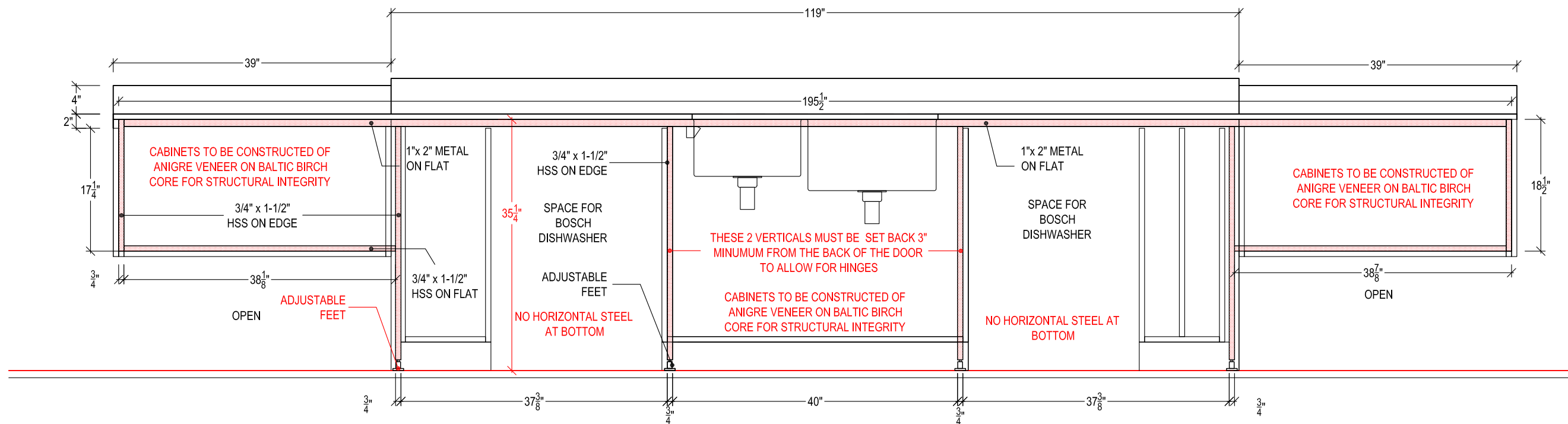
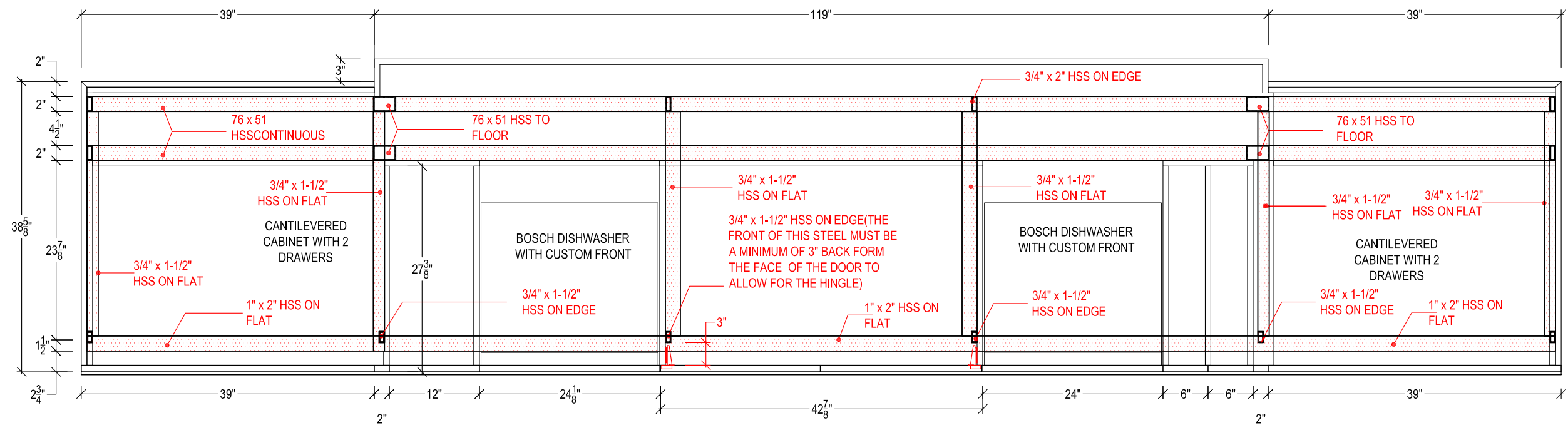


1 FRONT ELEVATION
K24 SCALE : 3/4" =12"



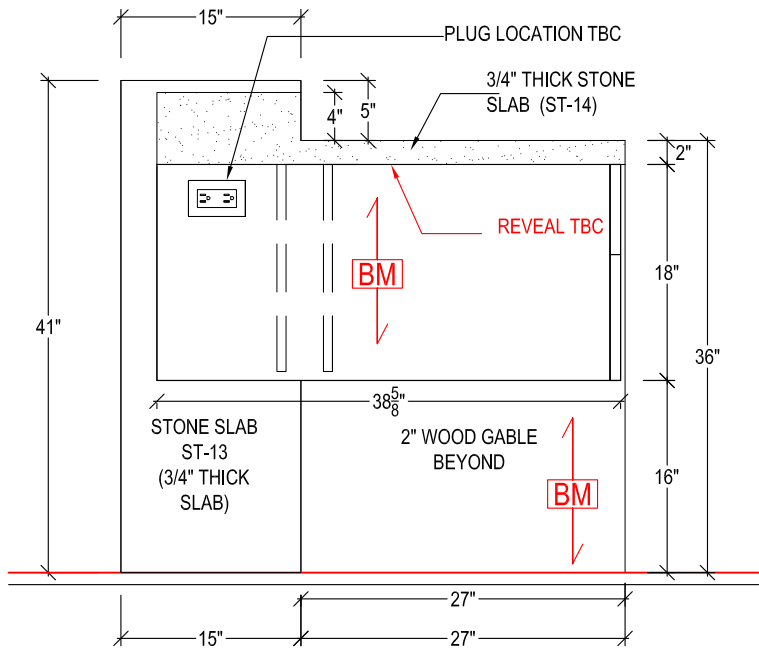
2 BACK ELEVATION
K24 SCALE : 3/4" =12"

	TITLE:		JUNE 14,2012	REV1	AUG 20,2012	D-K24
	AREA:	KITCHEN		REV2	SEPT 14,2012	
	SCALE:	AS SHOWN	DRAWN BY:	REV3		
24 of 27						

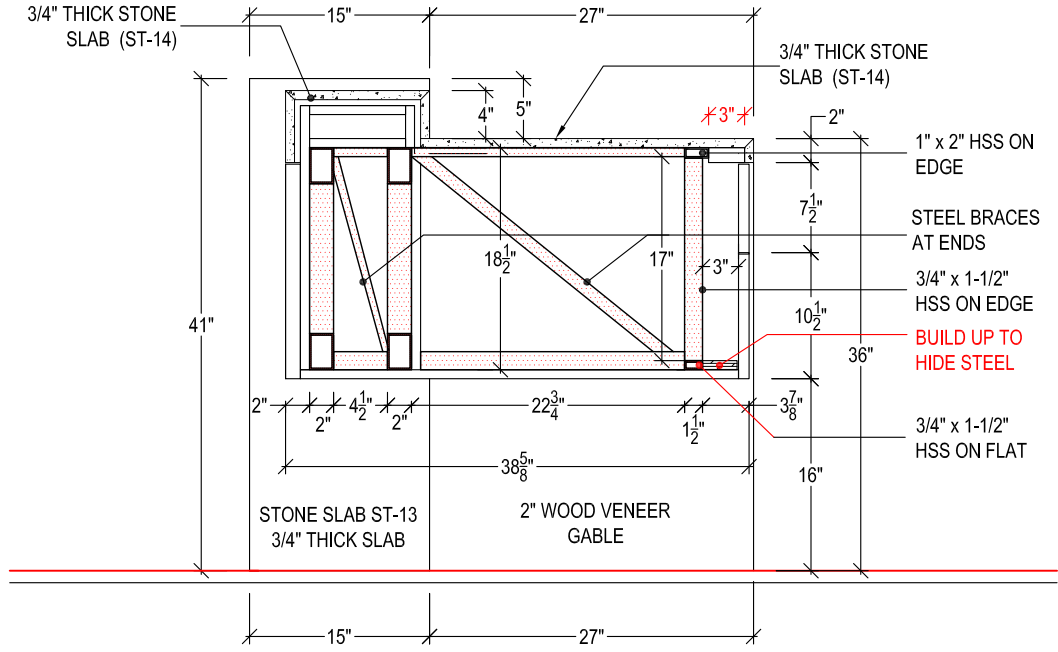


TITLE:		JUNE 14,2012	REV1	AUG 20,2012	D-K25
AREA:	KITCHEN		REV2	SEPT 14,2012	
SCALE:	AS SHOWN	DRAWN BY:	REV3		

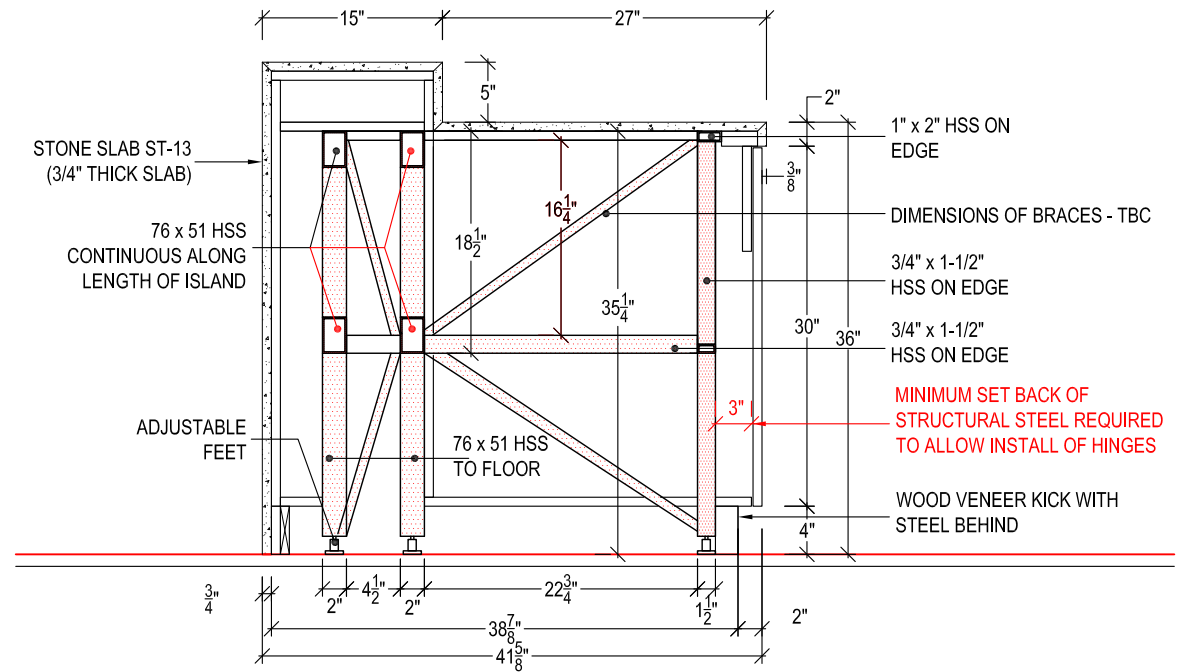
25 of 27



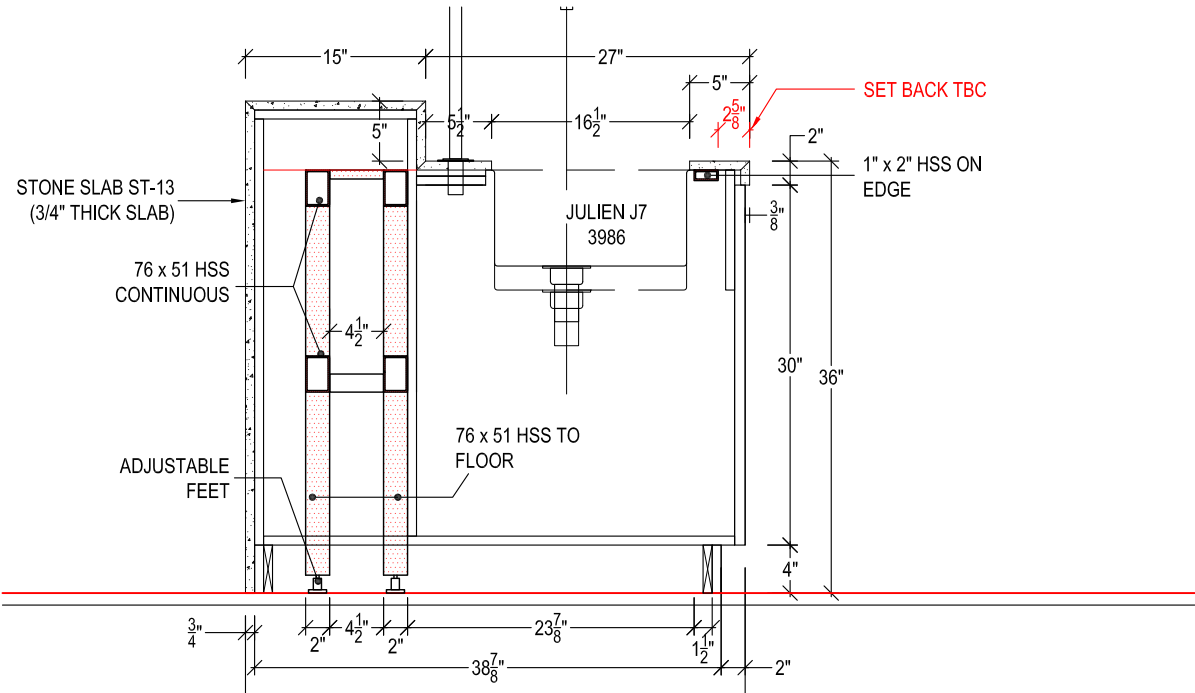
1 ELEVATION
K26 SCALE : 3/4" =12"



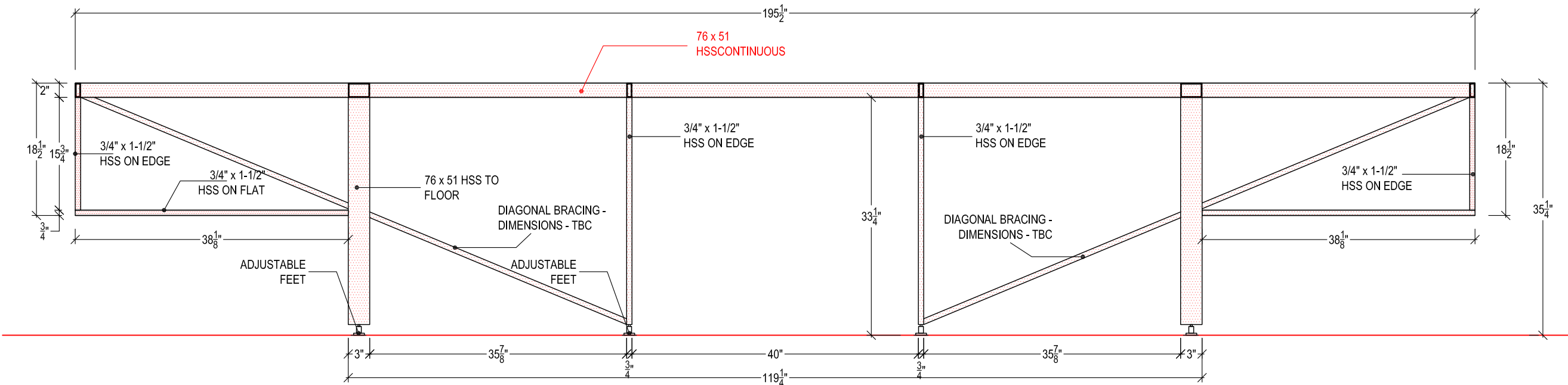
2 SECTION AT END CABINETS
K26 SCALE : 3/4" =12"



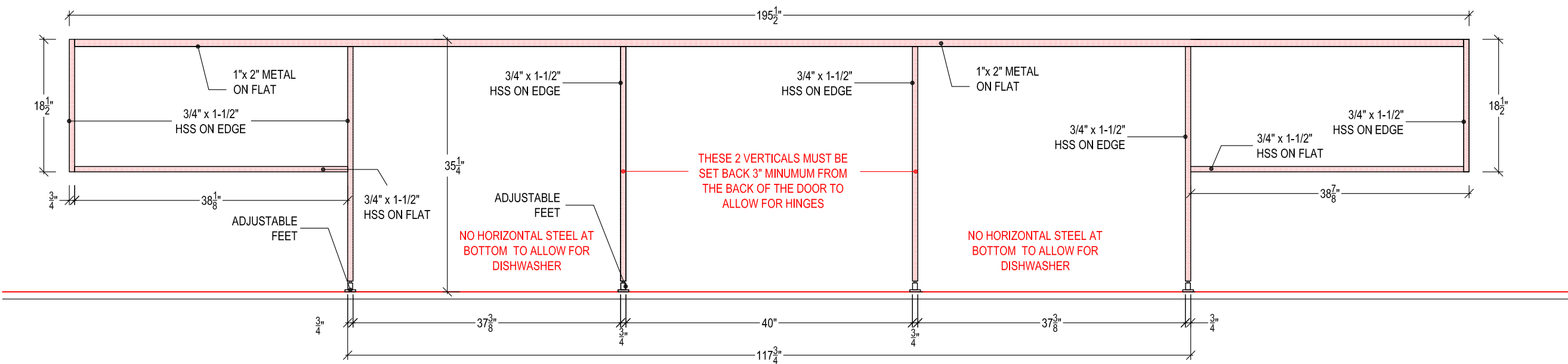
3 SECTION AT SINK CABINET GABLE
K26 SCALE : 3/4" =12"



4 SECTION AT SINK
K26 SCALE : 1-1/2" =12"



1 STRUCTURAL STEEL AT BACK
K27 SCALE : 3/4" = 12"



2 STRUCTURAL STEEL AT FRONT
K27 SCALE : 3/4" = 12"

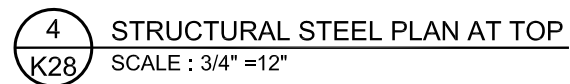
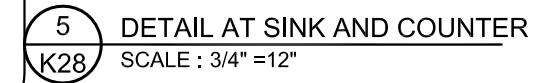
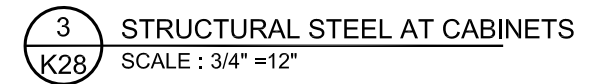
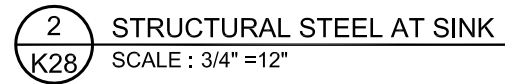
QUESTIONS:

HOW FAR BEHIND THE FACE OF THE COUNTER WILL THE FRONT OF THE 1"x1" STEEL PLATE STOP? -WILL THE COUNTER RETURN UNDER? AND HOW FAR?

THE FORWARD POSITION OF THE 1"x2" WILL IMPACT THE POSITION OF THE SINK. HOW FAR BACK FROM THE FRONT OF THE COUNTER DO WE WANT THE CUTOUT FOR THE SINK?

THE VERTICAL STEEL AT THE SINK CABINET WILL BE WITH THE CABINET AND WILL HAVE TO BE AT LEAST 3" BACK FROM THE DOOR TO ALLOW FOR THE HINGES TO BE INSTALLED AND REMOVED. WILL THE STEEL BE COVERED BY FINISHED WOOD AND HOW MUCH SHOULD WE ALLOW FOR THAT?

[REDACTED]	TITLE:	[REDACTED]	JUNE 14,2012	REV1	AUG 20,2012	D-K27
	AREA:	KITCHEN		REV2	SEPT 14,2012	
	SCALE:	AS SHOWN	DRAWN BY:	REV3		

D-K28
27 of 27